



IN THIS ISSUE

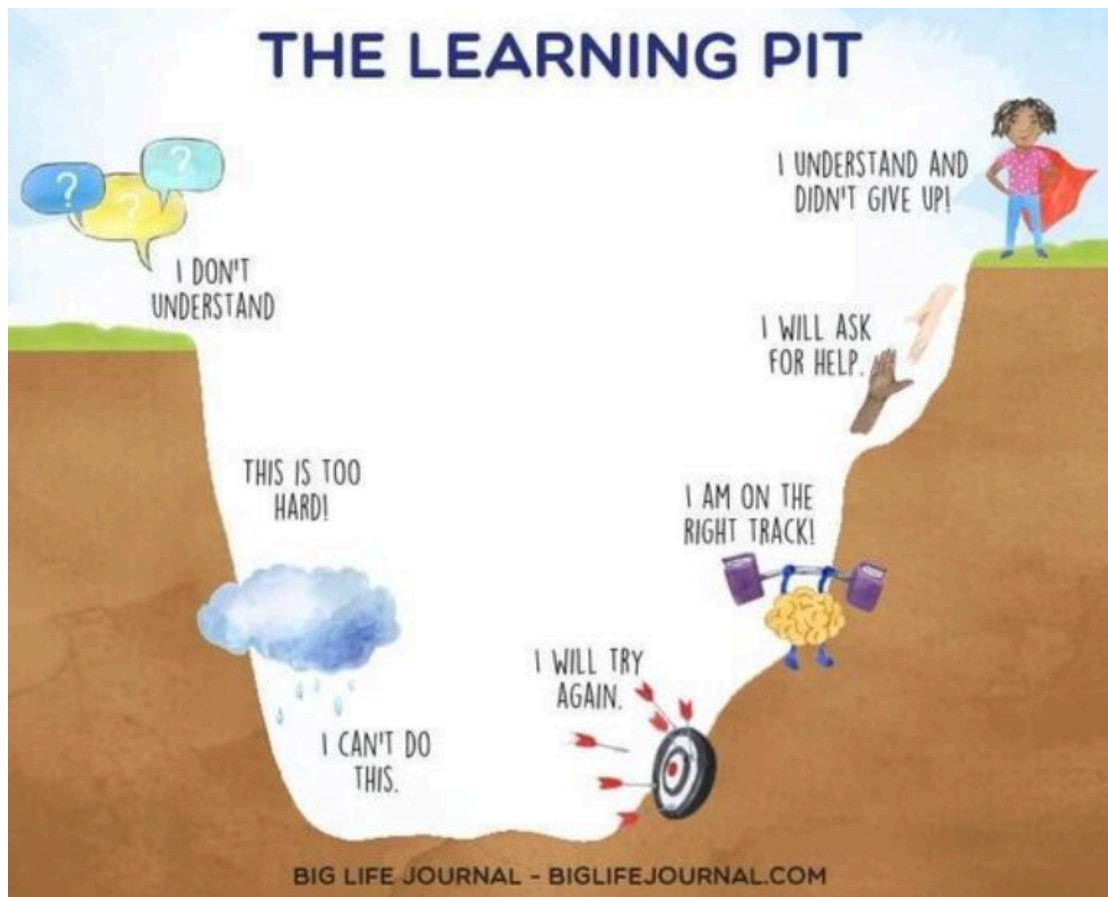
- MESSAGE FROM ADMINISTRATION
- MATH NIGHT
- AUTHOR VISITS
- KINDNESS WEEK
- DIVERSITY, EQUALITY, INCLUSION
- TESTING DATES
- GIRLS ON THE RUN
- BULLYING PREVENTION
- OUTDOOR RECESS
- IMPORTANT DATES

MESSAGE FROM ADMINISTRATION

Dear HES families,

We are very excited for our HES Intermediate (Grades 3-5) Math Night, tonight! Thank you to all those families who RSVP'd and plan to attend. We wanted to take this opportunity to put a little spotlight on how we can support students in their math learning journeys.

Often times, math performance is connected to mindset and sometimes students will experience what we call "The Learning Pit".



We can help students out of the learning pit by providing them strategies to calm the body, shift into mindfulness and flexibility, and encourage Growth Mindset attitudes. One of the easiest ways to encourage Growth Mindset at home is to be aware and deliberate about the language you and your child use.

Here are some examples of how you can shift your language and students' mindsets while they are engaging in math homework or talking to you about their math experiences throughout the day!

DEVELOPING A GROWTH MINDSET

INSTEAD OF...	SAY THIS...
I'm not good at this	What am I missing?
I give up	I'll use a different strategy
It's good enough	Is this really my best work?
I can't make this any better	I can always improve
This is too hard	This may take some time
I made a mistake	Mistakes help me to learn
I just can't do this	I am going to train my brain
I'll never be that smart	I will learn how to do this
Plan A didn't work	There's always Plan B
My friend can do it	I will learn from them

At Hammond ES, we are teaching students to practice a Growth Mindset in all areas, not just math.

If you would like to learn more about Growth Mindset, here are some links to great resources!

VIDEOS

[What Growth Mindset Means for Kids/Ted Talk \(5:39 mins\)](#)

[Growth Mindset for Students \(Class Dojo\) ½ Episode \(2:35 mins\)](#)

[Growth Mindset vs Fixed Mindset \(2:19 mins\)](#)

[Developing a Growth Mindset \(4:51 mins\)](#)

ACTIVITIES

[Big Life Journal](#) is a kids journal with prompts to assist in teaching growth mindset.

Growth Mindset coloring pages to engage in a positive self-concept.

[Daily affirmations](#) to promote positive thinking and growth mindset.

[Kid and family friendly songs to promote growth mindset.](#)

BOOKS

[The Girl Who Never Made Mistakes](#) by Mark Pett

[Bubble Gum Brain](#) by Julia Cook

[The Most Magnificent Thing](#) by Ashley Spires

[Jabari Jumps](#) by Gaia Cornwall

[Your Fantastic Elastic Brain](#) by JoAnn Deak

Thank you for supporting your child and helping to promote a Growth Mindset attitude!

Heather Moraff, Principal

Nykia Mapson, Assistant Principal

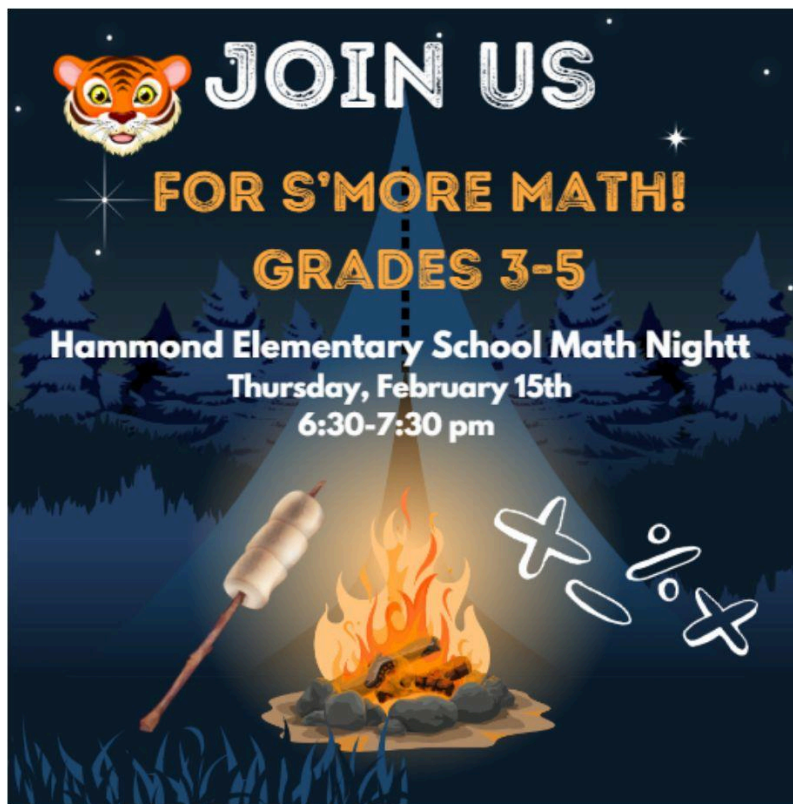
MATH NIGHT

Attention all **grade 3-5** mathematicians and families!
MATH NIGHT is tonight Thursday, February 15th.

Join us for **S'MORE** math!! Our amazing staff and math experts will host math learning and tasks during this fun-filled night!

To help us prepare, please RSVP using [this link](#). Please note that Math Night is geared towards our **3rd, 4th, and 5th grade students only**.

(Don't worry, our upcoming Literacy Night will be geared towards our Kindergarten, 1st, and 2nd grade students. More information to come!)



AUTHOR VISITS

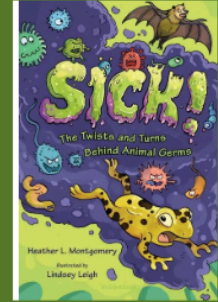
Our media specialist, Caroline Haavik, has worked hard to bring two exciting author visits to HES in the month of February. The first visit with Heather L. Montgomery is for grades 4 and 5 on February 20. Sudipta Barhan-Quallan will be visiting all grade levels on February 29.

HES AUTHOR VISIT - 2/20/24 4TH AND 5TH GRADES

Heather L. Montgomery



Keep an eye out for a
PERMISSION SLIP and
informational flier in
your student's TAKE
HOME FOLDER.



Website: <https://heatherlmontgomery.com/>

HES AUTHOR VISIT - 2/29/24



**Sudipta
Bardhan-Quallan**

Keep an eye out for a
PERMISSION SLIP and
informational flier in your
student's TAKE HOME FOLDER.

Website: www.sudipta.com

KINDNESS WEEK continues

Tomorrow is the final day of our Kindness Spirit Week. We have so enjoyed seeing students and staff participating in the daily themes.

HES KINDNESS WEEK

- FEB 12 KICKING OFF KINDNESS MONDAY**
wear mismatched socks and/or shoes 
- FEB 13 TEAM KINDNESS TUESDAY**
wear gear from your favorite sports team 
- FEB 14 FRIENDSHIP WEDNESDAY**
wear red or pink or hearts 
- FEB 15 PEACE, LOVE, KINDNESS, THURSDAY**
wear tie dye or groovy 70's attire 
- FEB 16 DREAMING OF KINDNESS FRIDAY**
wear pajamas / comfy clothing 

DIVERSITY, EQUALITY, & INCLUSION

This month we would like to recognize and thank the following individuals/families for taking the time to share the Lunar New Year display with our school.

Lei Qian(Leyna Zhou, 4th grade)

Ying Li (Gloria Teng, 4th grade)

Ying Guo (Kevin Zhang, 5th grade)

Jifu Yin (William Yin, 1st grade/ Vivian Yin 5th grade)

Hang Lei (Catherine Lei, 2nd grade)

Qian Zhang (Brandon Ren, 2nd grade)



Lunar
New
Year



BLACK HISTORY MONTH



another amazing bulletin board
from ELMS DEIL Scott Taylor!

2024 Theme: African Americans and the Arts

Explore

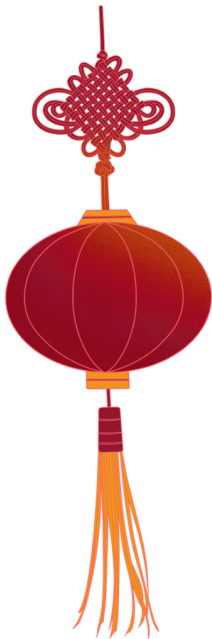
[Black History Month: Teaching the Complete History](#)
from Learning for Justice

[Black History Month Resources](#)
from Mid-Atlantic Equity Consortium

[Black History Month Digital Toolkit: Art as a Platform for Social Justice](#)
from Smithsonian Institute

[Teaching Hard History Podcast](#)
from Learning for Justice

["We've Got the Blues" Music Lesson Plan \(for music educators\)](#)
from Ashley Cuthbertson



Lunar New Year

Chinese New Year 2024 is a Year of the Dragon, more specifically, Wood Dragon, starting from February 10th, 2024, and lasting until January 28th, 2025. The Dragon symbolizes power, nobleness, honor, luck, and success in traditional Chinese culture. In the past, Chinese New Year was a special time to honor deities and ancestors. During present-day celebrations, there are several commonplace traditions practiced by people. For instance, homes are thoroughly cleaned out. This cleaning is symbolic of chasing out bad luck and ushering good fortune into the year. Families gather and enjoy special meals. Young ones are given money in red envelopes. On the final day, the 'Lantern Festival' takes place. During the festival, glowing lanterns are hung up in temples or carried around. The streets are taken over by parades and ceremonial dances.

Resources

[About Lunar New Year](#)
[National Museum of Asian Art](#)
[Howard County Library Event \(all ages\) on February 10](#)

TESTING DATES

Grade 5 Maryland Integrated Science Assessment (MISA)

Students in 5th grade will take the Maryland Integrated Science Assessment (MISA) assessment on March 4th, March 5th, March 7th and March 8th. Students who are absent on the testing dates will participate in a makeup session during the March 4th-22nd testing window. MISA measures student achievement on the Maryland Content Standards in Science in Grade 5 (testing content from Grades 3, 4 and 5). To learn more about MISA, please visit the [HCPSS Testing](#) page. **Students are encouraged to bring corded headphones (if possible). Wireless or bluetooth headphones are not compatible with the testing platform.**

UPCOMING: Maryland Comprehensive Assessment Program (MCAP)

Students in grades 3-5 will take the Maryland Comprehensive Assessment Program (MCAP) during the month of April and/or May. The MCAP assessments measure student achievement on the Maryland College and Career Ready Standards in English language arts and math. To learn more about MCAP, please visit [HCPSS Maryland Comprehensive Assessment](#) page.

Students in grades 3-5 are encouraged to bring in their own corded headphones (if possible). Wireless or bluetooth headphones are not permitted during the MCAP Assessments.

Before testing, make sure your child gets a good night's rest and eats a hearty and filling meal before testing.

MCAP Testing Dates		
Grade	ELA	Math
5th	4/4, 4/5, 4/8, 4/9	4/29, 4/30
4th	4/11, 4/12, 4/15, 4/16	5/1, 5/2, 5/6 ,5/7
3rd	4/22, 4/23, 4/24, 4/26	5/8, 5/9, 5/15, 5/16

***Makeup testing will take place during the testing window.

5th Grade Simulated Congressional Hearings: Your Help Needed!



Howard County
Public School System

**CALL FOR SIMULATED
CONGRESSIONAL HEARING
(SCH) JUDGES**

HELP SHAPE THE FUTURE OF OUR NATION.

JUDGES WILL:

- Listen to 5th graders testify
- Ask questions
- Provide feedback

Register to Judge at:
<http://tinyurl.com/2024-SCH-RSVP>

Register Here: <http://tinyurl.com/2024-SCH-RSVP>

Girls on the Run®



SO MUCH MORE THAN RUNNING



Afterschool programming
for **EVERY** *girl.*

LOCATION: Hammond Elementary

DAYS/TIMES: Mon & Wed 3:15-4:30pm

FIRST PRACTICE: Wednesday, April 3rd

3rd-5th
grade girls

LEARN MORE



BULLYING PREVENTION

As we approach the second half of the school year, we wanted to remind you that HCPSS is dedicated to providing a safe and supportive environment that focuses on student well-being. We are taking this time to uplift the importance of reporting any type of bullying that has occurred. We will be reviewing this with our students and staff as we start the second half of the school year, and hope that you too can uplift this at home.

For children facing the emotional toll of bullying, a supportive individual can make all the difference. Please encourage your children to reach out to a trusted staff member at school should they need to report anything. As parents and guardians, you will use the same reporting form as students by following the steps outlined below.

How do I report bullying?

1. When you believe bullying has taken place, you should report it through the Bullying, Cyberbullying, Harassment and Intimidation (BCHI) reporting form. Reporting can take place in one of three ways:
 - a. Complete a [BCHI online reporting form](#)
 - b. BCHI paper reporting form (available in the main office, staff workroom, school counseling office, media center, and health services office)
 - c. An oral report to a staff member
2. It is important to note that policy states “in the event the reporting party does not complete a BCHI Reporting Form, school administrators/supervisors will take the appropriate steps to address and document the incident.” Therefore, if you or someone else makes an oral report, it then must be documented (i.e. through a BCHI reporting form) by the administrator.

OUTDOOR RECESS

Cold weather has arrived!!! We wanted to remind you that students will still be going outside for recess each day. Please make sure you send your child to school with warm clothes. **All clothing needs to be labeled with your child's name.** Below you will find the HCPSS criteria we consider when having outdoor activities.

- Temperature and humidity
- Wind chill
- Heat index and air quality
- Age of students
- Length of time outdoors
- Adequacy of the children's clothing
- Condition of the playground
- Falling precipitation (more than a sprinkle or mist)
- Thunder and lightning

Generally, it is assumed that students will be outside for recess, physical education, or any other outdoor activity when the temperature combined with the wind chill is not less than 20 degrees Fahrenheit or the heat index is less than 95.

IMPORTANT DATES

- Thu. Feb. 15 Math Night for grades 3-5 at 6:30-7:30pm
- Mon. Feb. 19 Presidents Day Schools and offices closed
- Thu. Feb. 29 Talent Show
- Mon. Mar. 4 New Kindergarten registration begins,
5th Grade Md Integrated Science Assessment (MISA) testing
- Tues, Mar. 5 5th Grade Md Integrated Science Assessment (MISA) testing
- Thu. Mar. 7 5th Grade Md Integrated Science Assessment (MISA) testing
- Fri. Mar. 8 5th Grade Md Integrated Science Assessment (MISA) testing
- Tue. Mar. 12 PTA Meeting
- Wed. Mar. 13 Professional Work and Wellness Day Schools close 3 hours early.
- Mon. Mar. 18 Harlem Wizards Game (PTA)
- Wed. Mar. 20 Restaurant Night at The Charmery
- Mon. Mar. 25- SPRING BREAK – Schools Closed
Mon. Apr. 1
- Thu. Apr. 4 5th Grade MCAP testing for ELA
- Fri. Apr. 5 5th Grade MCAP testing for ELA
- Mon. Apr. 8 5th Grade MCAP testing for ELA
- Tues. Apr. 9 5th Grade MCAP testing for ELA
- Wed. Apr. 10 Professional Work Day Schools closed for students
- Thu. Apr. 11 4th Grade MCAP testing for ELA
- Fri. Apr. 12 4th Grade MCAP testing for ELA
- Sat. Apr. 13 PTA Spring Carnival
- Mon. Apr. 15 4th Grade MCAP testing for ELA
- Tue. Apr. 16 4th Grade MCAP testing for ELA
- Wed. Apr. 17 Report Cards issued
- Mon. Apr. 22 3rd Grade MCAP testing for ELA

Tue. Apr. 23 3rd Grade MCAP testing for ELA

Wed. Apr. 24 3rd Grade MCAP testing for ELA

Fri.. Apr. 26 3rd Grade MCAP testing for ELA

Mon. Apr. 29 5th Grade MCAP testing for Math

Tue. Apr. 30 5th Grade MCAP testing for Math

Wed. May 1 4th Grade MCAP testing for Math

Thu. May 2 4th Grade MCAP testing for Math

Mon. May 6 4th Grade MCAP testing for Math

Tue. May 7 4th Grade MCAP testing for Math

Wed. May 8 3rd Grade MCAP testing for Math

Thu. May 9 3rd Grade MCAP testing for Math

Wed. May 15 3rd Grade MCAP testing for Math

Thur. May 16 3rd Grade MCAP testing for Math